

## LED Street Light

LSL **81**



IP65

IK08

CE ErP

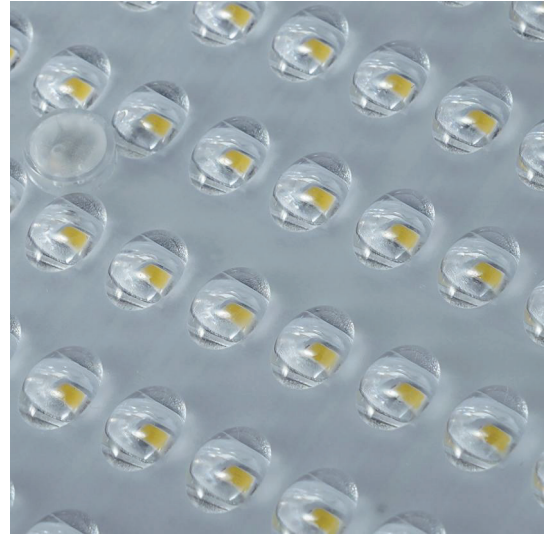
### Advantages

- Efficiency:100Lm/W
- Die-casting aluminum body with anti-corrosion powder painting
- Extra 10KV surge protector can be integrated.
- Motion sensor can be integrated optionally.

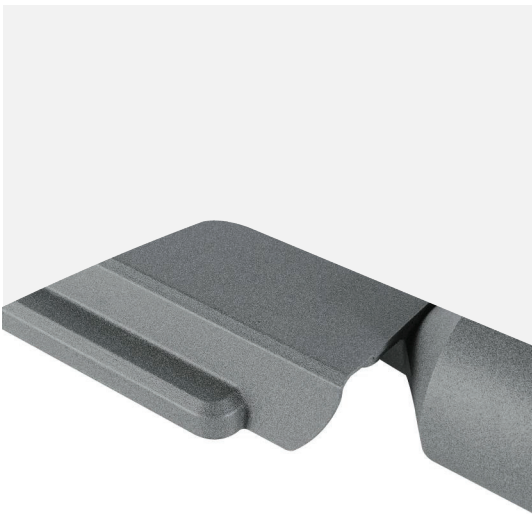
LSL81 fits built-in light sensor to automatically turn off the LED during the day and turn on at night, to save electricity according to environment changes



**Display**



**Lens**



**Back Details**

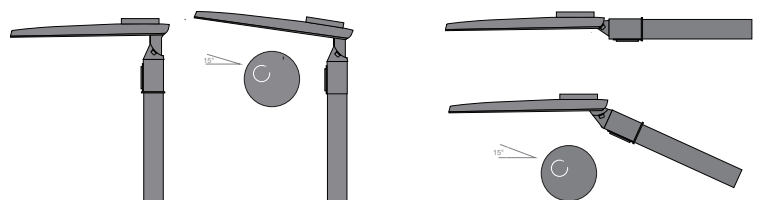


**Bottom**

## Installation Diagram

It can be installed horizontally and vertically as shown in the figure.  
Wide adjustable angles: from  $-15^{\circ}$  to  $+5^{\circ}$ ,  $5^{\circ}$  at a time.

1. Install the lamp to the pole and tighten the screw.
2. Loosen the connecting rod converter screw and adjust the angle.
3. Tighten connecting rod converter screws.



# LSL81 Technical Data

LED Chip Brand	Sanan
LED Chip Type	SMD2835
Luminous Efficacy	100LM/W
Color Rendering Index (RA)	> 70   80   90
Color Temperature	2700K-6500K
Beam Angle	70°*130°
Number Of Leds	A:72 Pcs   B:144 Pcs   C:216 Pcs   D:288 Pcs
Life Time	50000 Hours

## Electrical Parameters

Power A	50W
Power B	100W
Power C	150W
Power D	200W
Voltage	AC100-265V   AC220-240V
Frequency	50/60Hz
Electrical Security Class	Class I   Class II
Work Temperature	(-30 °C to 50 °C)
Humidity	10 % to 90%
IP Grade	IP65
IK Grade	IK08
SPD	10KV

## Driver

Type:	Linear   DOB
Power Factor	> 0.90
Performance	> 90%
THD	< 15%

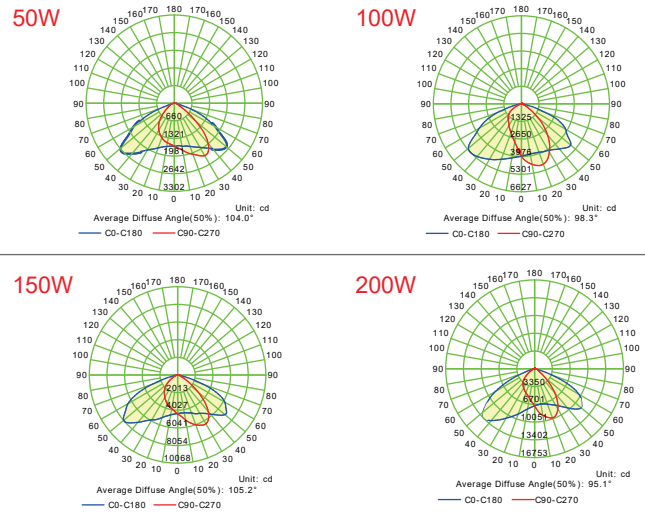
## Materials and Properties

Material Of Shell	Aluminum+PC
Material Of Lens	PC
Color Of Shell	RAL 9002   RAL7040 etc (customized by customer)
Pole diameter (mm)	60
Size A (mm)	445*115*40
Size B (mm)	497*130*40
Size C (mm)	565*165*40
Size D (mm)	682*193*40

## Tested according to

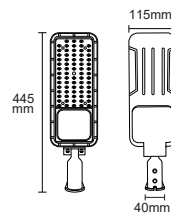
CE-LVD	EN 60598-2-3:2003 + A1:2011 EN IEC 60598-1:2021 EN 62471:2008 EN 62493:2015
CE-EMC	EN 55015:2013+A1:2015 EN 61547:2009 EN IEC 61000-3-2:2019 EN 61000-3-3:2013+A1:2019
ROHS	IEC62321-1:2013, IEC62321-3-1:2013 IEC62321-4:2013/AMD1:2017 IEC62321-5:2013, IEC62321-6:2015 IEC62321-7-1:2015, IEC62321-7-2:2017 IEC62321-8:2017

## Typical Photometric Features

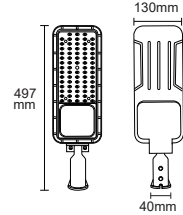


## Dimensional drawing

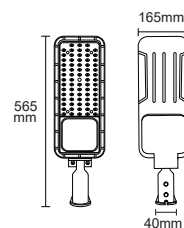
A.Size A



B.Size B



C.Size C



D.Size D

